



*32<sup>nd</sup>  
Edition*

International Conference on  
Engineering, Technology and Innovation

22 – 24 June 2026 | Porto, Portugal



**3D-CIRCULAR**

Digital Deep Tech Driven Circular Economy





# 3D-CIRCULAR

Digital Deep Tech Driven Circular Economy

## MISSION

1. Empowering innovation through deep-tech skills to drive startup growth and technological advancement.
2. Fostering a workforce prepared for the green transition by promoting circular economy skills across industries.
3. Supporting climate neutrality through targeted training in circular economy practices and clean growth strategies.
4. Accelerating Europe's digital transformation and tech sovereignty by investing in advanced digital skills.
5. Enhancing productivity and simplifying industrial processes through skilled digital professionals.
6. Driving sustainable growth and innovation through integrated training in deep-tech and circular economy skills.
7. Promoting inclusivity by reducing regional disparities through digital and circular upskilling.
8. Aligning with Europe's industrial strategy by advancing future-oriented digital and green competencies.

## ABOUT

3D-CIRCULAR aims to advance higher education in alignment with the EU Green Deal and Digital Europe strategies by embedding digital services, platforms, and IT competencies into modern educational ecosystems. The project bridges the gap between academic excellence and industry demands, ensuring that curricula remain relevant, future proof, and innovation driven. By promoting sustainability, technological advancement, and personal development, 3D-CIRCULAR fosters a culture of lifelong learning and empowers individuals through reskilling and upskilling opportunities strengthening Europe's capacity for green and digital transformation.





PORTO





# 3D-CIRCULAR

Digital Deep Tech Driven Circular Economy

## 3D-CIRCULAR @ ICE

1. Special Sessions with Paper Presentations
  - 3 slots (maximum of 4 papers per slot)
2. 3D-Circular Summit
  - 1 Panel Session (4 panellists at least)
  - 2 Summit Sessions
3. 3D-Circular Project Meeting
  - 1,5 day

## Keynotes

1. Possibility to invite a keynote speaker for the first day of the conference (30 minutes)
  - Neet to be approved by ICE Board

## FEES

1. Participant with accepted paper
  - Conference Fees Apply (Early Bird Rate 890€; Regular Rate 960€)
  - All included
2. Participant with no paper in the Conference
  - 3D-Circular Special Fees Apply (Early Bird Rate 375€; Regular Rate 425€)
  - Access to ICE Sessions + 3D Circular Sessions + Coffee Breaks + Lunches + Social Events + 3D Circular Project Meeting
3. Participant of 3D-Circular Project Meeting
  - 1,5 day – no Fees
  - Access to Project Meeting Lunches and Coffee Breaks

**Note: Keynote Sessions and Panel Sessions are in the Main Room of the Conference (aprox. 300 people capacity)**

# Agenda

Meeting Venue – still in negotiations;  
will try to be near Alfandega

## 22/06 Monday

- 09:00 Welcome
- 09:30 Keynotes
- 10:30 Coffee Break
- 11:00 Parallel Sessions

### 12:30 Lunch

- 14:00 Panel Session
- 15:00 3D-Circular Summit
- 16:20 Coffee Break
- 16:40 3D-Circular Summit
- 18:00 End of Day 1

## 21/06 Sunday

Reception

Welcome Cocktail

## 23/06 Tuesday

- 09:00 Welcome
- 09:30 Keynotes
- 10:30 Coffee Break
- 11:00 Special Session #1

### 12:30 Lunch

- 14:00 Panel Session
- 15:00 Special Session #2
- 16:20 Coffee Break
- 16:40 Special Session #3
- 18:00 End of Day 2

São João

## 24/06 Wednesday

- 09:00 3D-Circular Meeting
- 10:30 Coffee Break
- 11:00 3D-Circular Meeting

### 12:30 Lunch

- 14:00 3D-Circular Meeting
- 16:20 Coffee Break
- 16:40 3D-Circular Meeting
- 18:00 End of Day 3

Banquet & Awards

## 25/06 Thursday

- 09:00 3D-Circular Meeting
- 10:30 Coffee Break
- 11:00 3D-Circular Meeting
- (Industrial Tour)

# 3D Circular Project Meeting Venue

Under negotiation

# Accommodation

Under negotiation

# Travel Guide

## HOW TO GET TO PORTO

### BY PLANE

The preferential airport to reach Porto is Francisco de Sa Carneiro Airport - For information about flights to Porto, please visit the ANA Airport Website (<https://www.aeroportoporto.pt/pt/opo/home>).

## GETTING TO AND FROM THE AIRPORT

### PUBLIC TRANSPORTATION



#### • METRO

- ✓ You can easily get to the airport or to the city centre by metro. Line E (Purple) runs every 20 or 30 minutes, depending on the time and day of the week (<http://www.metrodoporto.pt>).



#### • BUSES

- ✓ STCP provides bus connections from the airport to various areas of the city. (<http://www.stcp.pt>).

#### • SHUTTLES

- ✓ At the airport you have at your service a wide range of shuttles making connections to the city centre and to many locations in the outskirts of Porto. (<http://www.100rumos.com>).



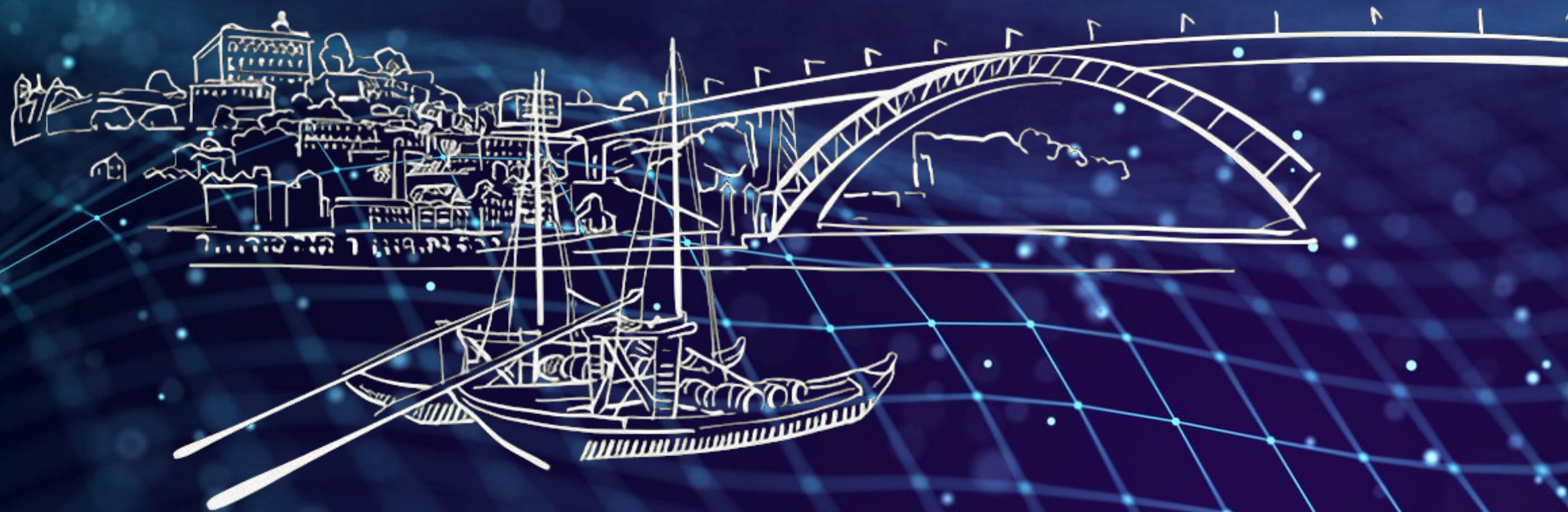
#### • TAXI

- ✓ Taxis circulate 24/7 all throughout the city and are always available at taxi ranks. If you prefer, you can order a taxi by phone.



Francisco de Sá Carneiro Airport

Thank you!



UNINOVA